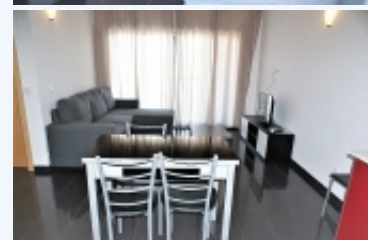


RT T1+1 17A, HOLIDAY RENTAL 2
 BEDROOM APARTMENT IN DEVELOPMENT
 ROCHA TOWER IN ALGARVE, PORTIMAO,
 AT 150 METERS FROM THE BEACH PRAIA
 DE ROCHA

Holiday Rentals. 240,00 €



**Rua do Sol, Lote 5, Ed. Rocha Tower, 17ºA, Praia da Rocha,
 8500-801**

Holiday rental 2 bedroom apartment in development Rocha Tower in Algarve, Portimao, at 150 meters from the beach Praia de Rocha

Holiday rental 2 bedroom apartment in Algarve, Portimao, at 150 meters from Praia da Rocha, in the Rocha Tower development with swimming pool for adults and children and communal garden. Fully equipped kitchen, living room with sofa bed for two people, bedroom with double bed, small room with double bed for two persons, bathroom with shower base with shower, washbasin for 2 persons, toilet and bidet. The apartment is on the 17 floor with a view of the sea. Swimming pool for adults and children, reception and parking in the garage of the building. Air conditioning. Accommodation for 4-6 people. Possibility to rent from September to June monthly. Close to the Portimão Marina, the Algarve International Racecourse, shopping centers, sports centers, golf courses and a city rich in cultural events, the Rocha Tower venture is demarcated by modern bold design architecture. A unique place to stay, relax and where you can enjoy the tranquility, all this makes this a special place. High quality finish and variety of equipment that meet the needs of the day to day. The philosophy of planning the interior space allows different types of apartments to enjoy fantastic views of the sea and natural daylight. All apartments have large balconies. Among the equipment available stands out the kitchen with all necessary appliances, ceramic floor of the brand "Roca" in the living room and kitchen, rooms with floating floor and air conditioning. Pool, garden, 24 hour concierge and parking, make this unique and unique complex near Praia da Rocha. LOCATION Praia da Rocha is internationally known and is the card of the city of Portimão. The large and beautiful beach, inviting for sunbathing and sea, offers excellent conditions for water sports such as water skiing, sailing, surfing, windsurfing and diving, as well as taking a boat trip. Praia da Rocha - 150 m Golf Courses - 1.5 km Marina of Portimão - 1 km Autódromo Internacional de Algarve - 14 km Schools - 1 km Faro Airport - 65 km Hospital - 2 km

BASE INFORMATION:

Living : 1
 rooms
 Bedrooms : 2
 Bathrooms : 1

AREA INFORMATION:

Total area : 90
 Useful area : 75

BUILDING INFORMATION:

Number of Floors : 18

CONVENIENCE:

General Amenities: Cable TV, Electric Hot Water, Cable Internet,

Accessibility Amenities: Kitchen utensils, Ironing Board, Wheelchair Ramp, Wi-fi, Sheets and Towels, Iron,

Appliance Amenities: Vitroceramic Cooktop, Microwave, Washing machine, Dish washer, Refrigerator, Range/Oven, Exhauster,

Community Amenities: Public transport, Super market, Beach, Taxi, Fuel station, Swimming Pool, Marketplace, Hospital, Gym, Drugstore, Bus station, Train station, Green spaces, Town center, Shopping center, Tennis Court, Golf course, Coffee shop, Bank,

Energy Savings Amenities: Double Glazed,

Exterior Amenities: Swimming Pool, Common garden, Indoor Parking,

Interior Amenities: Air conditioning,

Landscape amenities: Landscaping,

Security Amenities: Video surveillance, Video Intercom

.Concierge,High Security Door,

NEIGHBORHOOD:

Super market : 2 minutes by Walk

Park : 5 minutes by Car

Cinema : 5 minutes by Car

Beach : 3 minutes by Walk

Coffee shop : 2 minutes by Walk

Airport : 45 minutes by

Train station : 15 minutes by Car

Hospital : 15 minutes by Car

Town center : 5 minutes by Car

Shopping center : 2 minutes by Walk